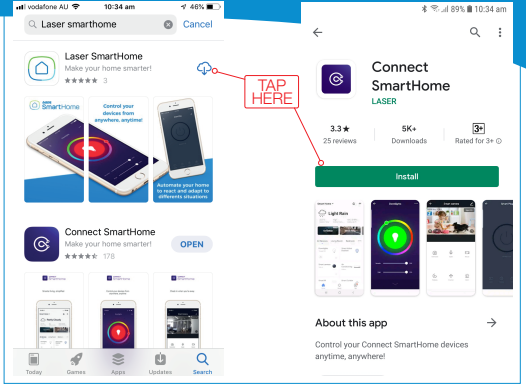


Manual RGB Smart Light

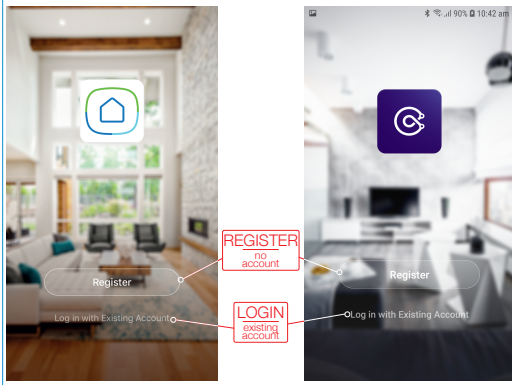
1 GET THE APP



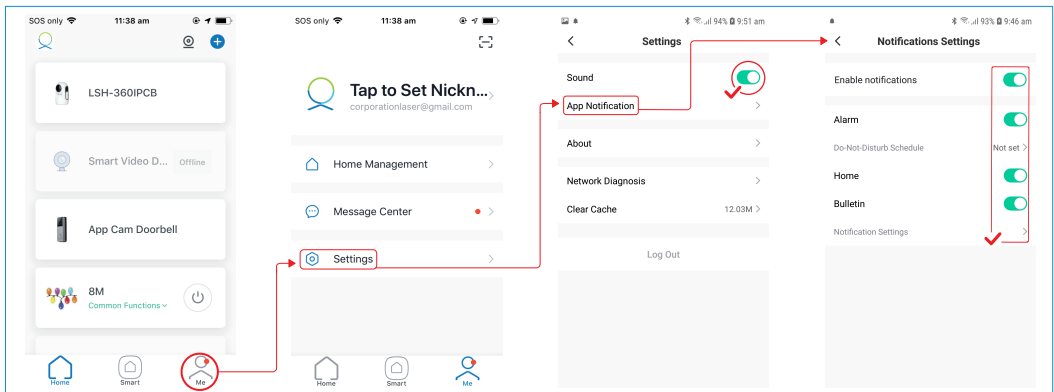
QR Codes for
Downloading Apps



2 REGISTER OR LOGIN TO APP



3 RECOMMENDED APP SETTINGS



4 | CONNECTING LIGHT TO APP

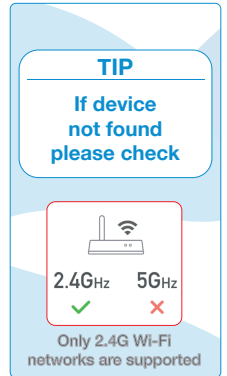
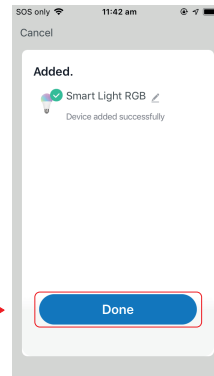
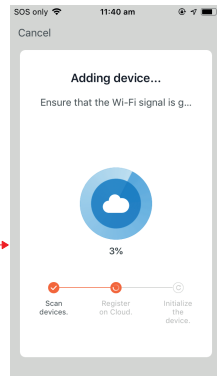
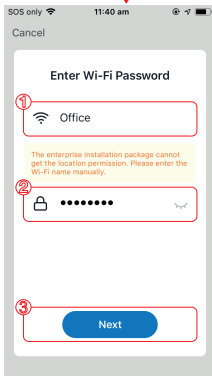
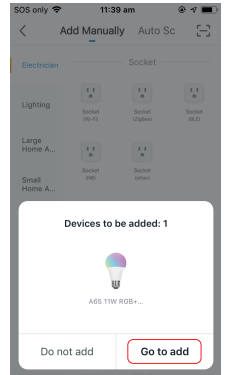
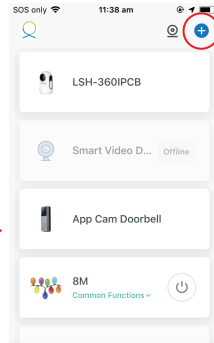
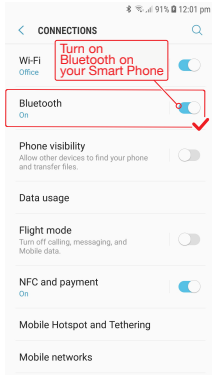
METHOD ONE BLUETOOTH + WIFI

EASY

Connect Light to Power



TIP
If setting up multiple lights,
please connect one at a time.



METHOD TWO

WIFI

Devices with Batch Numbers 1902223 - 2002857
use Method TWO only.

If light not flashing turn ON/OFF 3 times.



Connect Light to Power

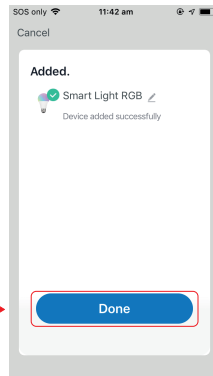
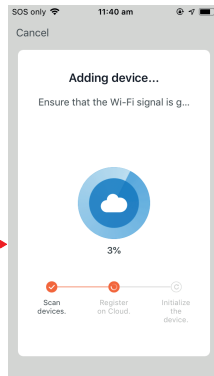
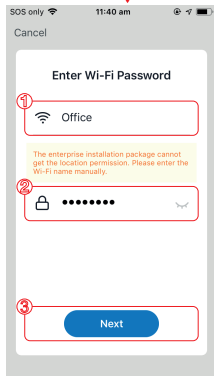
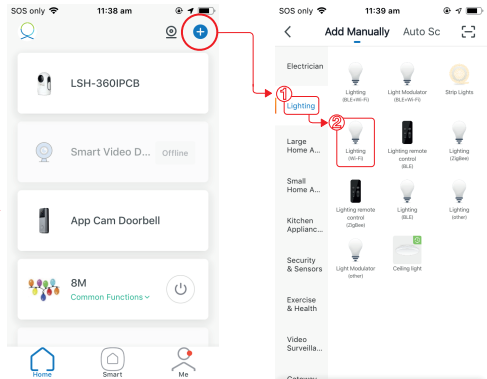
TIP

If light not flashing
turn ON/OFF 4 times



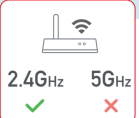
TIP

If setting up multiple lights, please
connect one at a time (unplug other
lights if on same switch)



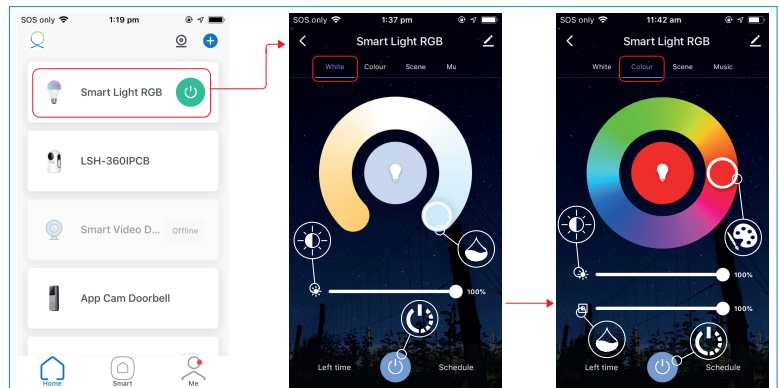
TIP

If device
not found
please check

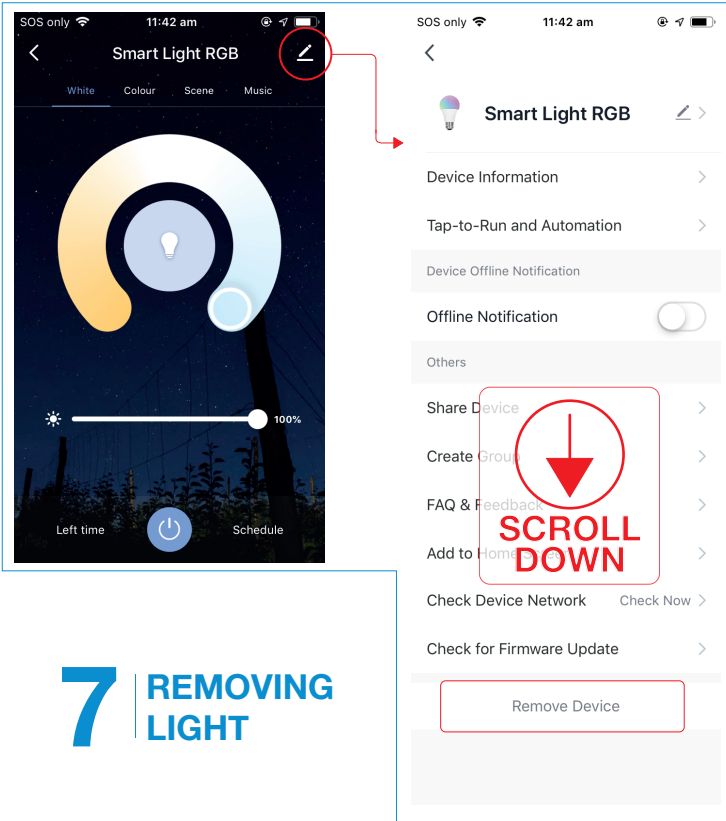


Only 2.4G Wi-Fi
networks are supported

5 USING THE LIGHT



6 LIGHT SETTINGS



7 REMOVING LIGHT

TROUBLESHOOTING

The device is not connecting to the APP:

1. Check your Wifi username and password are correct and you are only using 2.4 Ghz Wifi connections as the 5Ghz band is not supported.

The light is blinking slowly and will not pair:

1. The light might be in AP pairing mode. You can pair the light in AP Mode by switching from EZ Mode to AP Mode on the "Reset the Device first" screen in the APP.
2. Stop pressing the pairing button and press and hold again to put the light into the fast blinking pairing mode.

For more
helpful guides
visit us at



LASER

www.youtube.com/LasercoAu

CONNECT

www.youtube.com/channel/UCCYzBiADapJN55Zzp3yfvLQ



WARRANTY

Our goods come with guarantees that cannot be excluded under the Australian Consumer Law. You are entitled to a replacement or refund for a major failure and compensation for any other reasonably foreseeable loss or damage. You are also entitled to have the goods repaired or replaced if the goods fail to be of acceptable quality and the failure does not amount to a major failure.