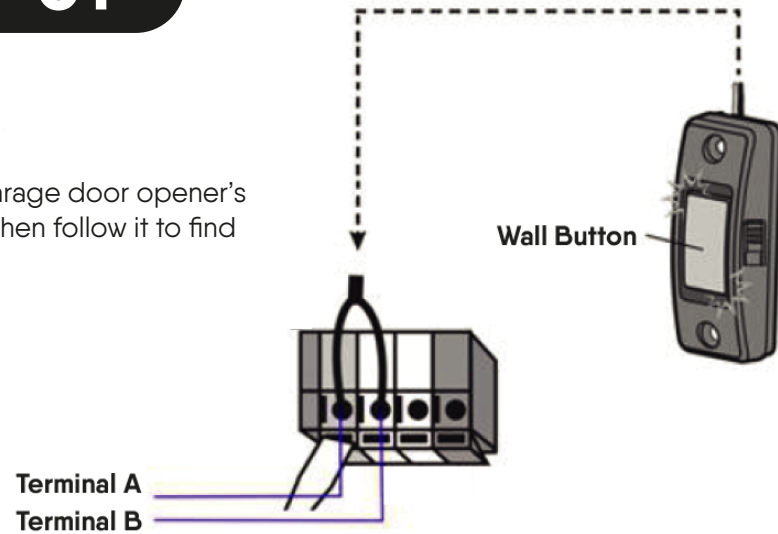


CHECK COMPATIBILITY AND INSTALLATION

Please Note: This Smart Garage Door Opener is only compatible with Sectional or Tilt style garage doors. It will not work with Roller style doors.

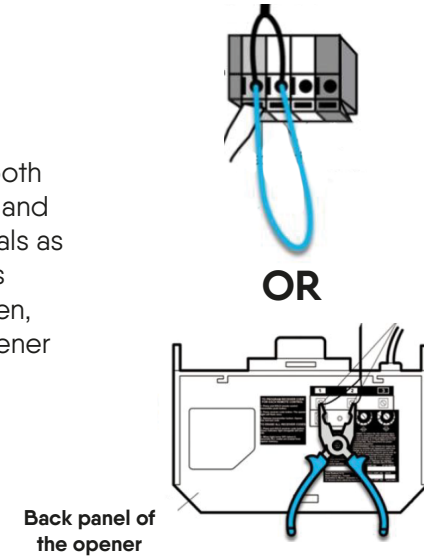
STEP 01

Find your garage door opener's wall button then follow it to find the terminal.



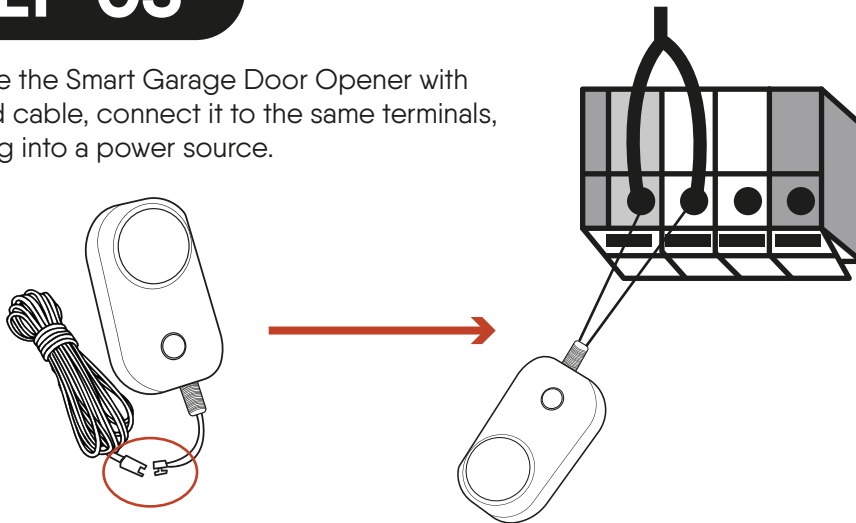
STEP 02

Take a short shielded wire (with both ends stripped) or a pair of pliers and put each end to the same terminals as the wall button wires. If doing this triggers your garage door to open, then our Smart Garage Door Opener is compatible.



STEP 03

Combine the Smart Garage Door Opener with included cable, connect it to the same terminals, then plug into a power source.



STEP 04

Affix sensor to the inside of your garage door, then pair the Smart Garage Door Opener to the Connect SmartHome APP. Finish by testing the open/close function of your garage door using the APP.

