

Manual Strip Light

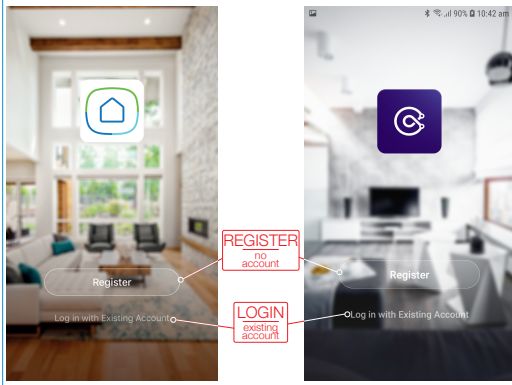
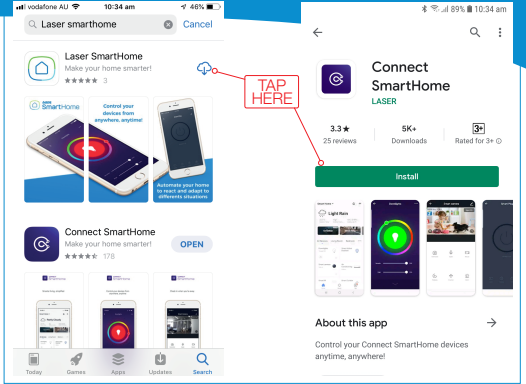
(CSH-STP2USB / LSH-STP2USB)

1

GET THE APP



QR Codes for
Downloading Apps

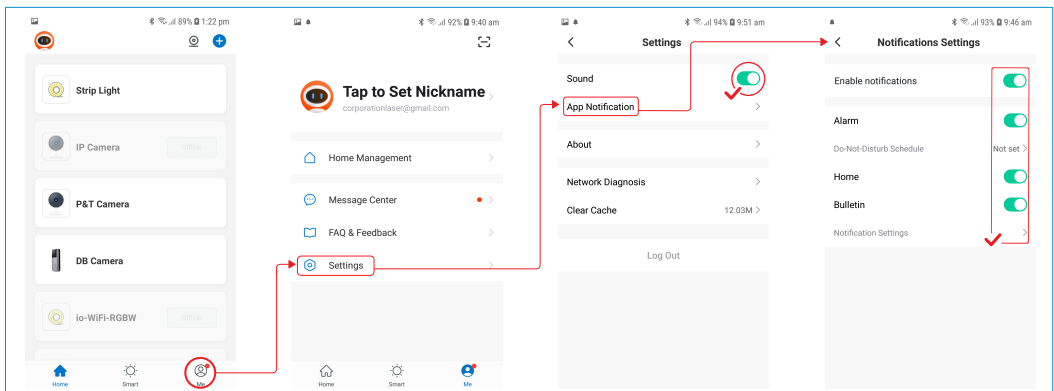


2

REGISTER OR LOGIN TO APP

3

RECOMMENDED APP SETTINGS



4 | POWERING STRIP LIGHT

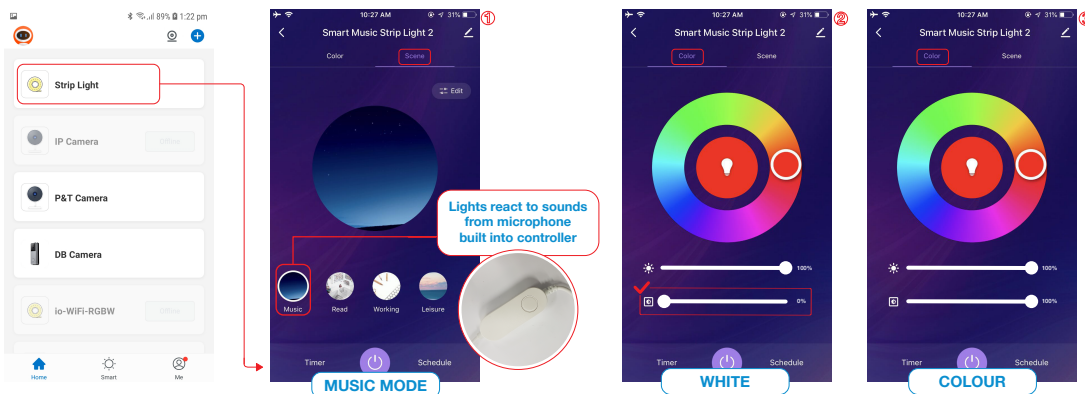


5 | CONNECTING LIGHT TO APP

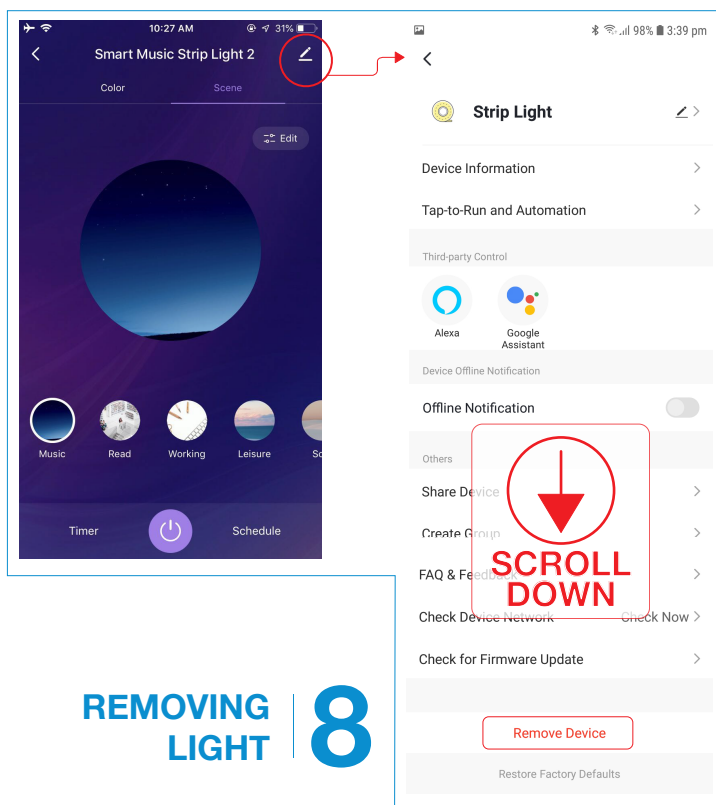
TIP
 If device not found please check

 Only 2.4G Wi-Fi networks are supported

6 | USING THE LIGHT

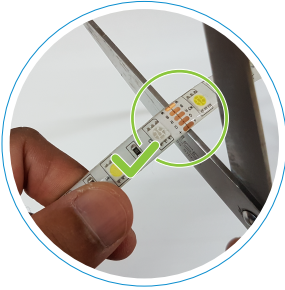


7 | LIGHT SETTINGS

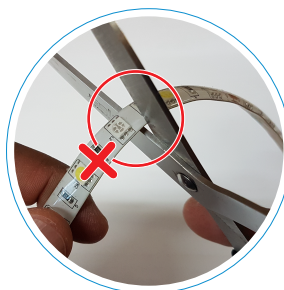


REMOVING LIGHT | 8

9 | ADJUSTING STRIP LENGTH

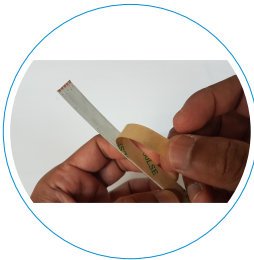


CORRECT



INCORRECT

10 | INSTALLATION TIPS



STEP ONE



STEP TWO



STEP THREE

TROUBLESHOOTING

The device is not connecting to the APP:

- Check your Wifi username and password are correct and you are only using 2.4Ghz Wifi connections as the 5Ghz band is not supported.

The light is not blinking / entering pairing mode:

- Press and hold the pairing button for a longer period of time.
- Try waiting a few seconds and holding the pairing button again.

The light is blinking slowly and will not pair:

- The light might be in AP pairing mode. You can pair the light in AP Mode by switching from EZ Mode to AP Mode on the "Reset the Device first" screen in the APP.
- Stop pressing the pairing button and press and hold again to put the light into the fast blinking pairing mode.

For more helpful guides visit us at



LASER

www.youtube.com/LasercoAu

CONNECT

www.youtube.com/channel/UCCYzBiADapJN55Zzp3yfvLQ



WARRANTY

Our goods come with guarantees that cannot be excluded under the Australian Consumer Law. You are entitled to a replacement or refund for a major failure and compensation for any other reasonably foreseeable loss or damage. You are also entitled to have the goods repaired or replaced if the goods fail to be of acceptable quality and the failure does not amount to a major failure.