

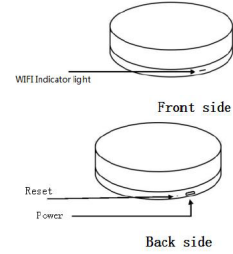


Universal Remote Control INSTRUCTION

CSH-IRREM



Product configuration



Wifi mode & AP mode

- (1) Hold the reset button for 6 seconds, the indicator will flash rapidly. Then device will be in smart Wi-Fi mode.
- (2) Hold the reset button again for 6 seconds, the indicator will flash slowly. The device will be in AP mode.

Specifications

component	name	A detailed description
The whole machine	product size	Diameter: 73.5X height: 30mm
	Product net weight	To be determined
	Working temperature	-10°-45°C
	Working humidity	Less than or equal to 80%
	The power input	5V 1A Micro USB
	Standby power consumption	< 0.50W
	Controllable distance	7M (feet)
	Status indicator light	Blue LED
	Warning lamp	Orange, blue LED
	The system supports	Apple & Android
The shell	Shell material	ABS transparent
	The wireless network	802.11b/g/n
TWISS wifi module	Network name	WiFi coverage area
	Security mechanism	WPA/WPA2
SHT307temperature and humidity	Temperature and humidity	Support temperature and humidity
	433MHz	Add 433MHz if as required
BT400 chipset	Infrared frequency	38-56802
	Infrared remote control	Support most household appliances which use infrared signal, support learning function

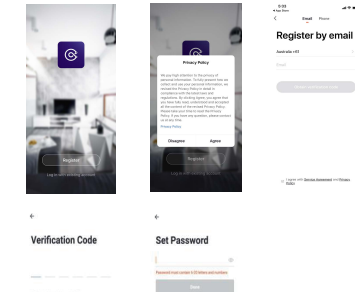
Download App

1. Android phone: Download "Connect SmartHome" from Google Play Store
2. IOS device: Download "Connect SmartHome" from APP store.



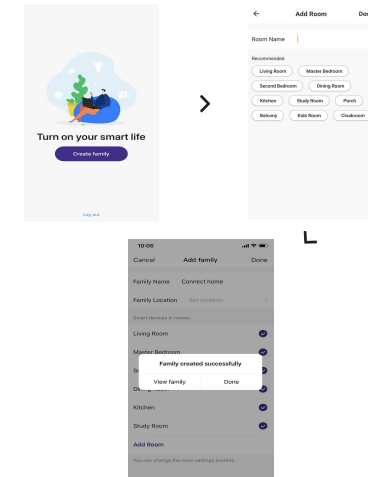
Register and login

1. Run "Connect SmartHome" from your smartphone.
2. Register and login

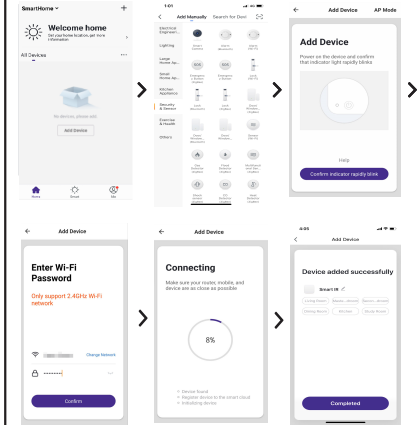


Add Home

- Click "Add Home" to add a home.

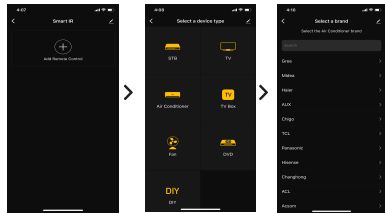


- "Add device", select device types as "all", Choose "Others", Click "Universal Remote Control". Confirm indicator rapidly blink"
- Then enter your Wi-Fi password. Wait till the circle reach 100%. When it shows "Device added successfully", you can name your alarm and control it via APP.



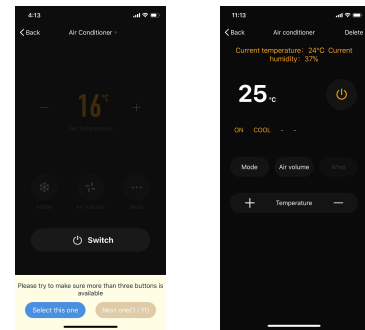
Main function

1. Add Remote Control
2. Choose the device type
3. Choose the brand



Main function

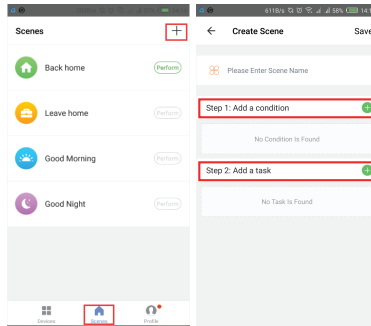
4. Click "Select this one"
5. Pairing completed.



6. Universal Remote Control can store up to 11 different remotes.

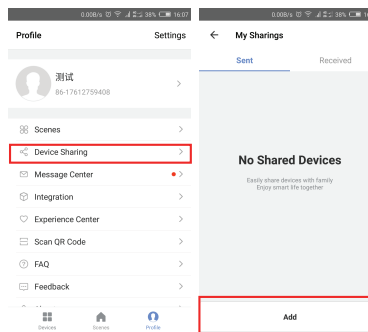
7. Scenes

Set scenes automate conditions (e.g. alarm trigger when your door is opened)



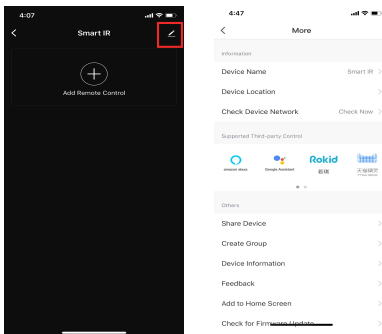
Device Sharing

Allow others to control the device by sharing device (note: you can delete the sharing in profile setting)



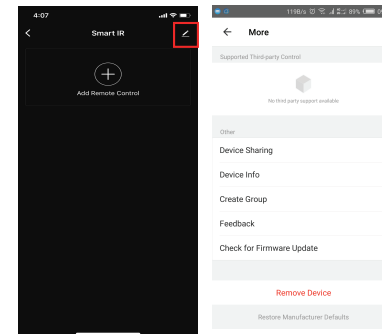
Create Group

You can click top right corner to rename your device. Or you can group it to other smart home products.



Remove device

You can click the top right corner to enter the settings and remove the device.



WARRANTY AGAINST DEFECTS

Laser Corporation Pty Ltd ("Laser") warrants your new product to be free from defects in materials and workmanship for 12 months, from the date of purchase, provided that the product is used in accordance with accompanying recommendations or instructions where provided. The benefit of this warranty is in addition to your rights under the Australian Consumer Law and to other rights and remedies of the consumer under a law in relation to the goods or services to which the warranty relates.

Through a network of retailers and resellers, Laser will provide you with your choice of a refund, repair or exchange (where possible) for this product if it becomes defective within the warranty period. This warranty will no longer apply where the defect is a result of alteration, accident, misuse, abuse, normal wear and tear, neglect or improper storage. Please retain your receipt as proof of purchase

How to make a product warranty claim:

Step 1: Find your receipt which proves the date of purchase. Where the date of purchase cannot be verified, your place of purchase or Laser will make an assessment based on the date of manufacture, the condition of the Laser Product and the type of defect.

Step 2a): Contact your place of purchase. They will assess the nature of the fault and refund or replace the product as per their store refund or warranty policy.

Step 2b): If your place of purchase cannot be contacted, then you can contact Laser. Customer Service with details of your defective Laser Product: Phone: (02) 9870 3388; or Email: support@laserco.com.au or online www.laserco.com.au/warranty (click on "Consumers (End Users)"). Our business address is at 1/6-8, Byfield Street, North Ryde, NSW 2113

Step 3: Laser will issue you with a Return Authorisation (RA) number within 48 hours. When requested, send us the defective Product and a copy of your receipt. Laser will cover the cost of the return delivery.

Step 4: Wait for us to contact you. Once we have received your defective Laser Product for inspection, we will inform you of our assessment of your claim within 7 days. When we contact you, we will firstly let you know whether you have a valid claim under this Warranty, and if so, we will inform you whether your defective Laser Product will be replaced or repaired, together with the number of days you can expect to wait to receive your replaced or repaired Laser Product.

Step 5: For further details on warranty cover and returns, please check Terms and Conditions for Warranty Returns section on www.laserco.com.au/warranty

Our goods come with guarantees that cannot be excluded under the Australian Consumer Law. You are entitled to a replacement or refund for a major failure and compensation for any other reasonably foreseeable loss or damage. You are also entitled to have the goods repaired or replaced if the goods fail to be of acceptable quality and the failure does not amount to a major failure.