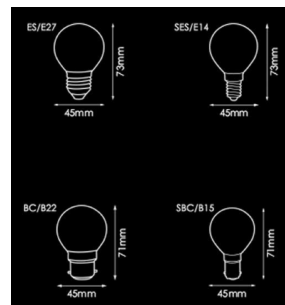




SMART LIGHTS

-CSH-XXX



Product configuration



Wifi Mode & AP Mode:

- (1) Press the reset button for 6 seconds till the indicator flash rapidly. Then device turns to smart wifi mode.
- (2) Press the reset button again for 6 seconds till the indicator flash slowly. The device turns to AP mode.

Specifications

- Voltage: AC85-265V, 50/60 Hz
- Power: 5W (RGB C+W)
- Lumen+/-10% : 400-460LM, 85LM/W
- Colour Temperature: 2700-6500K(light)+RGB
- Material: PC + Aluminum
- Base: E14 /E27/E26/B22
- Wireless standard: IEEE 802.11b/g/n
- Operating Temperature: 0°C ~ 40°C (32°F ~ 104°F)
- Operating Humidity: 20% ~ 85%
- Storage Temperature: 0°C ~ 60°C (32°F ~ 140°F)
- Storage Humidity: 0% ~ 90%
- *Security : WPA-PSK/ WPA2-PSK/ WPA/WPA2/ WEP/WPS2/WAPI
- *Encryption type : WEP/TKIP/AES
- *Wireless consuming: ≤0.3W
- *CRI: Ra>80
- *Working condition temp: -5~45degree
- *Beam Angle: 270°
- *Working Humidity: ≤80%

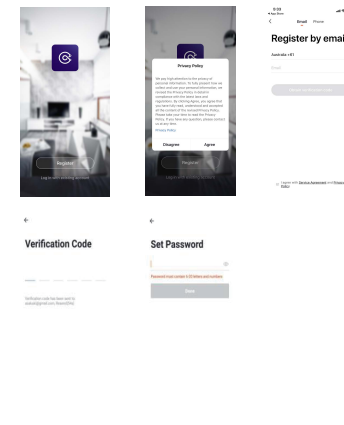
Download App

1. Android phone: Download "Connect SmartHome" from Google Play Store
2. IOS device: Download "Connect SmartHome" from APP store.



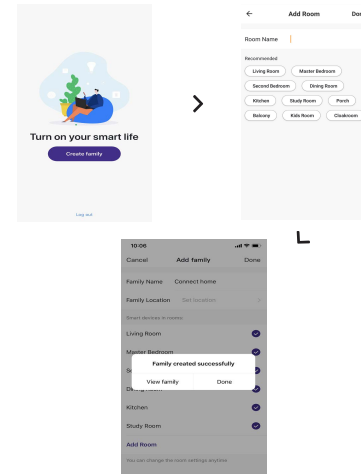
Register and login

1. Run "Connect SmartHome" from your smartphone.
2. Register and login

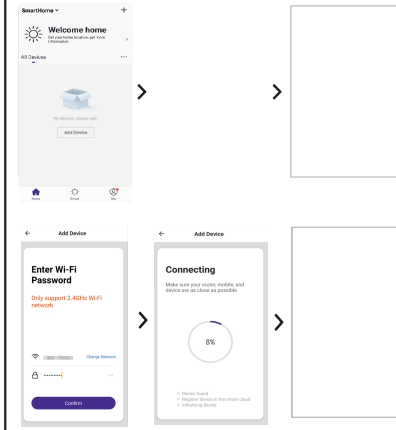


Add Home

- Click "Add Home" to add a home.

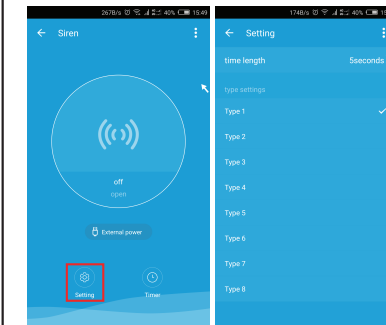


- "Add device", select device types as "all", choose "Security & Sensor", Click "Alarm (Wi-Fi)". Confirm indicator is flashing fast.
- Then enter your Wi-Fi password. Wait till the circle reach 100%. When it shows "Device added successfully", you can name your alarm and control it via APP.

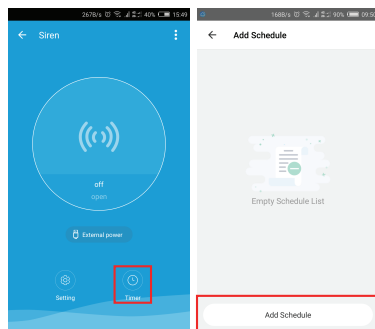


Main function

Setting Alarm duration and alarm sound type

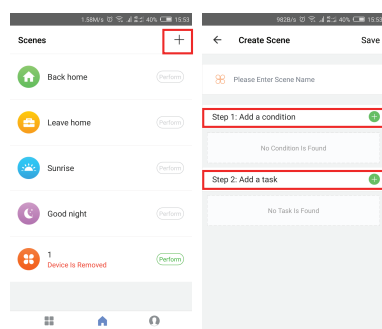


Schedule your alarm to ring.



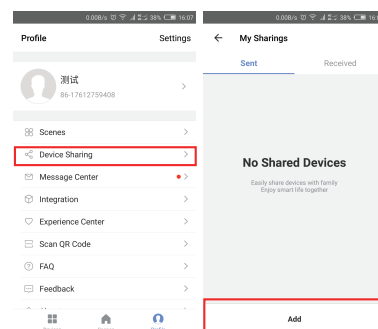
Customize Scenes

Scenes setting (Sound type setting and duration setting must be set)



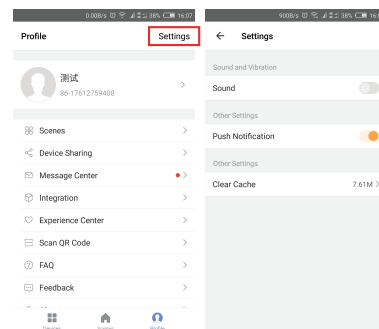
Device Sharing

Device Sharing : Allow others to control the device by sharing device (note: you can delete the sharing in profile setting)



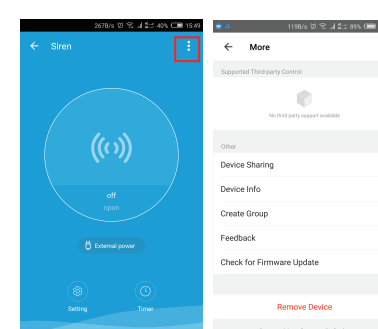
Push Notification

Enable to turn off .



Remove device

You can click top right corner to remove the device.



LED State

| Device Status | LED State |
|---------------|--|
| Smart Wi-Fi | Indicator flashes quickly |
| AP mode | Indicator flashes slowly |
| Triggered | The indicator will rapidly blink, and OFF after scheduled time |
| Reset | Indicator lights up for 4s and after 2 seconds lights off, device goes into configuration mode |

WARRANTY AGAINST DEFECTS

Laser Corporation Pty Ltd ("Laser") warrants your new product to be free from defects in materials and workmanship for 12 months, from the date of purchase, provided that the product is used in accordance with accompanying recommendations or instructions where provided. The benefit of this warranty is in addition to your rights under the Australian Consumer Law and to other rights and remedies of the consumer under a law in relation to the goods or services to which the warranty relates.

Through a network of retailers and resellers, Laser will provide you with your choice of a refund, repair or exchange (where possible) for this product if it becomes defective within the warranty period. This warranty will no longer apply where the defect is a result of alteration, accident, misuse, abuse, normal wear and tear, neglect or improper storage. Please retain your receipt as proof of purchase

How to make a product warranty claim:

Step 1: Find your receipt which proves the date of purchase. Where the date of purchase cannot be verified, your place of purchase or Laser will make an assessment based on the date of manufacture, the condition of the Laser Product and the type of defect.

Step 2a): Contact your place of purchase. They will assess the nature of the fault and refund or replace the product as per their store refund or warranty policy.

Step 2b): If your place of purchase cannot be contacted, then you can contact Laser. Customer Service with details of your defective Laser Product. Phone: (02) 9870 3388; or Email: support@lasero.com.au or online www.lasero.com.au/warranty (click on "Consumers (End Users)"). Our business address is at 1/6-8 Byfield Street, North Ryde, NSW 2113

Step 3: Laser will issue you with a Return Authorisation (RA) number within 48 hours. When requested, send us the defective Product and a copy of your receipt. Laser will cover the cost of the return delivery.

Step 4: Wait for us to contact you. Once we have received your defective Laser Product for inspection, we will inform you of our assessment of your claim within 7 days. When we contact you, we will firstly let you know whether you have a valid claim under this Warranty, and if so, we will inform you whether your defective Laser Product will be replaced or repaired, together with the number of days you can expect to wait to receive your replaced or repaired Laser Product.

Step 5: For further details on warranty cover and returns, please check Terms and Conditions for Warranty Returns section on www.lasero.com.au/warranty

Our goods come with guarantees that cannot be excluded under the Australian Consumer Law. You are entitled to a replacement or refund for a major failure and compensation for any other reasonably foreseeable loss or damage. You are also entitled to have the goods repaired or replaced if the goods fail to be of acceptable quality and the failure does not amount to a major failure.